

# ECP43CX

## CONCRETE PUMPS / BOOM PUMPS

G.V.W(Gross Vehicle Weight) : 31.1ton



\* Weight and dimension figures here are subject to change on various chassis option and additional axle application etc.

### BOOM

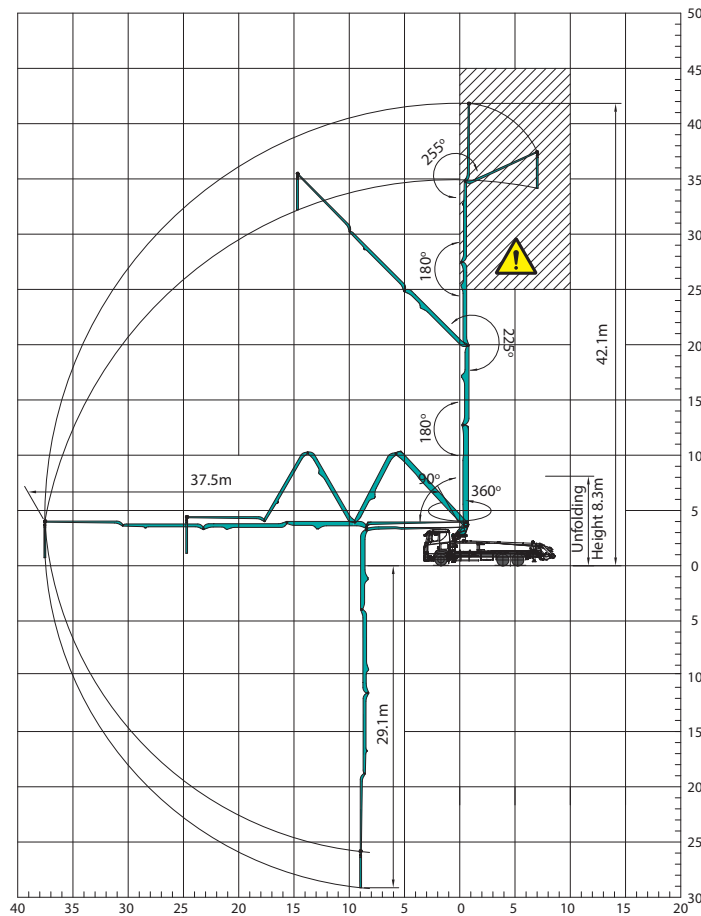
Folding type	5-section ZR-folding
Max. vertical reach	42.1m
Max. horizontal reach	37.5m
Max. depth reach	29.1m
Unfolding height	8.3m
Slewing angle	360deg.
End hose length	3m
Delivery pipe dia.	125mm

### PUMP

Pump cell	2114	2116
Control system	Closed Free Flow Hydraulic	
Main pump	A4VG180	A4VG125x2
Concrete cylinder (mm)	230x2,100	230x2,100
Strokes No.(per min.)*	26	30
Concrete output(m <sup>3</sup> /h)*	140	160
Concrete pressure(bar)*	70	85
Transfer tube type	S-Tube, S2018 (Dia. 200-180mm)	
Volume of hopper (liter)	600	600

\*Rod side. Ouput & pressure are theoretical data.

## WORKING RANGE



Don't use in caution area

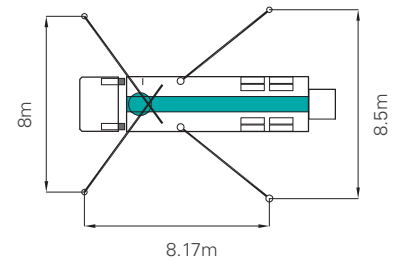
UNIT : m

## FEATURES & SUPPLY SCOPE

Inductive proximity switch with indicator	Flushing water pump(30bar)
Single lip concrete piston	Water tank (400L)
Hard-chromed concrete cylinders	Spray nozzle with 15m hose
Outrigger pilot check valves	Auto lubrication system for hopper
Greasing port on boom link and pedestal	Tungsten carbide for wear ring and plate
Working light on pedestal	Flap elbow(180-150mm) with cleaning port
Aluminum platform(non-skid)	Reducing pipe(150-125mm)
Bubble gauge on both side	Agitator motors on both side hopper
	Working light on hopper

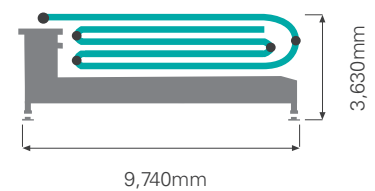
\*EVERDIGM reserves the right to make changes to specifications and supply scope. Specifications and supply scope are subject to change without prior notice.

## OUTRIGGER SPREAD



Front outrigger type X(Diagonal) Extension  
Rear outrigger type Swing-out

## UPPER BODY DIMENSION



## OPTIONS

- Twin wall pipe line
- Safety(oss) system
- Working light on boom
- Auto-lubrication for boom and pedestal
- Hopper cover
- Central manual lubrication for hopper
- Safety device for hopper
- Vibrator on hopper grid
- Stainless hand rail
- Auxiliary fuel tank on one side rear outrigger
- Customized color
- S2318(Big mouth)

# EVERDIGM



### HEAD OFFICE & FACTORY

49, Buyeong-gil, Jincheon-eup, Jincheon-gun, Chungcheongbuk-do, Korea (27844)  
TEL +82-1588-0758 FAX +82-43-530-3318

### SALES & MARKETING OFFICE

Room#1203, WoolimLion's Valley2, 2 Gasan digital 1-ro, Geumcheon-gu, Seoul, Korea (08591)  
TEL +82-2-801-0700 FAX +82-2-801-0799 E-mail angelica@everdigm.com